

MONTHLY MEMBERSHIP PROGRESS REPORT

District 24 I

Results as of: 3/31/2024

GMT:

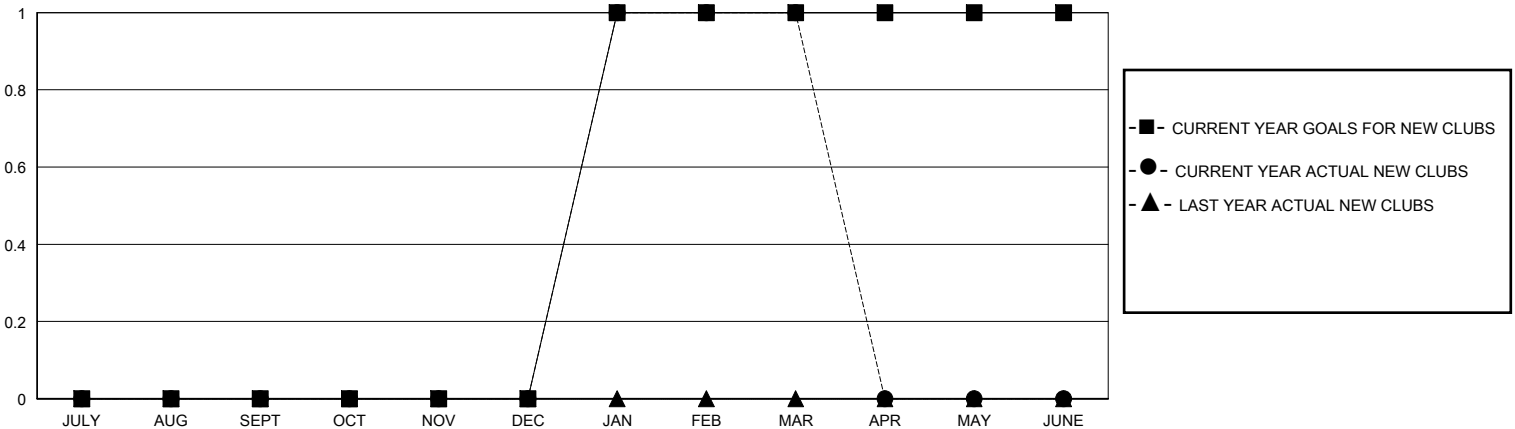
LOCATION VIRGINIA

GMT CA

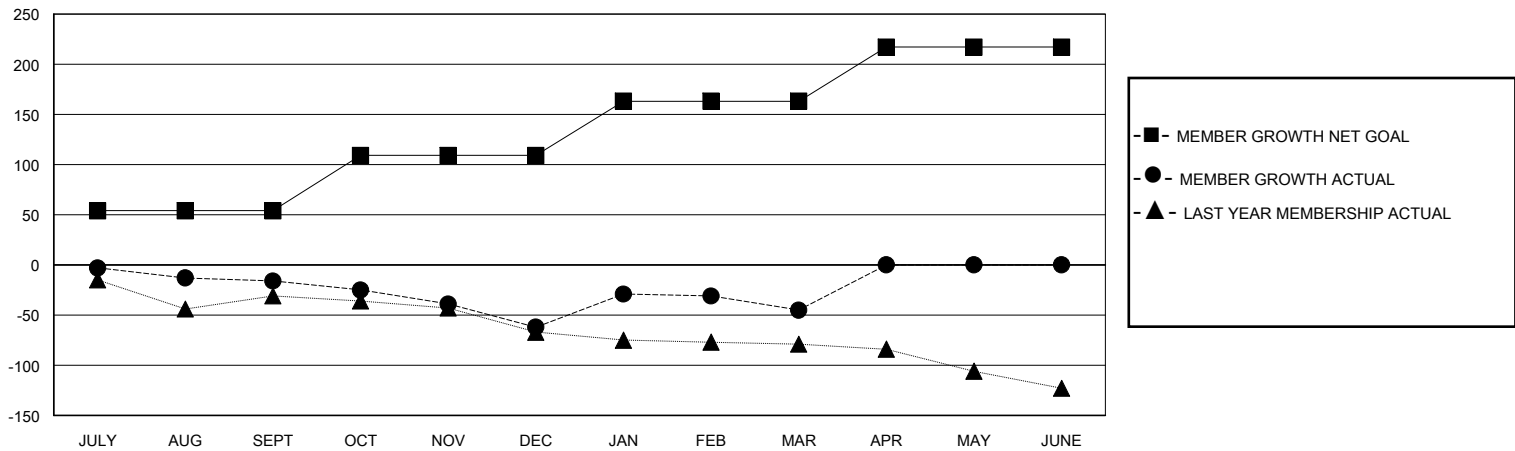
Clubs			
RESULTS FOR 2023-2024			
QUARTER	NEW CLUB GOAL	NEW CLUBS	DROPPED CLUBS
JULY/AUG/SEPT	0	0	1
OCT/NOV/DEC	0	0	1
JAN/FEB/MAR	1	1	0
APR/MAY/JUNE	0	0	0

Members			
RESULTS FOR 2023-2024			
QUARTER	MEMBER GROWTH NET GOAL	MEMBER GROWTH ACTUAL	DROPPED MEMBERS ACTUAL (including transfers)
JULY/AUG/SEPT	54	42	49
OCT/NOV/DEC	55	40	77
JAN/FEB/MAR	54	71	50
APR/MAY/JUNE	54	0	0

GOALS AND ACTUAL NEW CLUBS CUMULATIVE



GOALS AND ACTUAL MEMBERS CUMULATIVE



DROPPED CLUBS: 2	38 CLUBS OF 86 ADDED 1 OR MORE NEW MEMBERS	GENDER DISTRIBUTION MALE 1,087 (62.04%) FEMALE 665 (37.96%)
DROPPED MEMBERS DECEASED 27 CLUB CANCELLED 0 OTHER 149 TOTAL 176	CLICK HERE FOR CUMULATIVE MEMBERSHIP DATA	TOTAL FAMILY UNIT MEMBERS 267 FAMILY MEMBERS PAYING HALF DUES 135